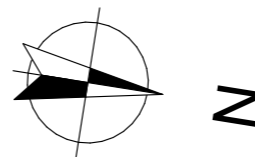


# LES BORÉALES

DE SAINT-PRYVÉ

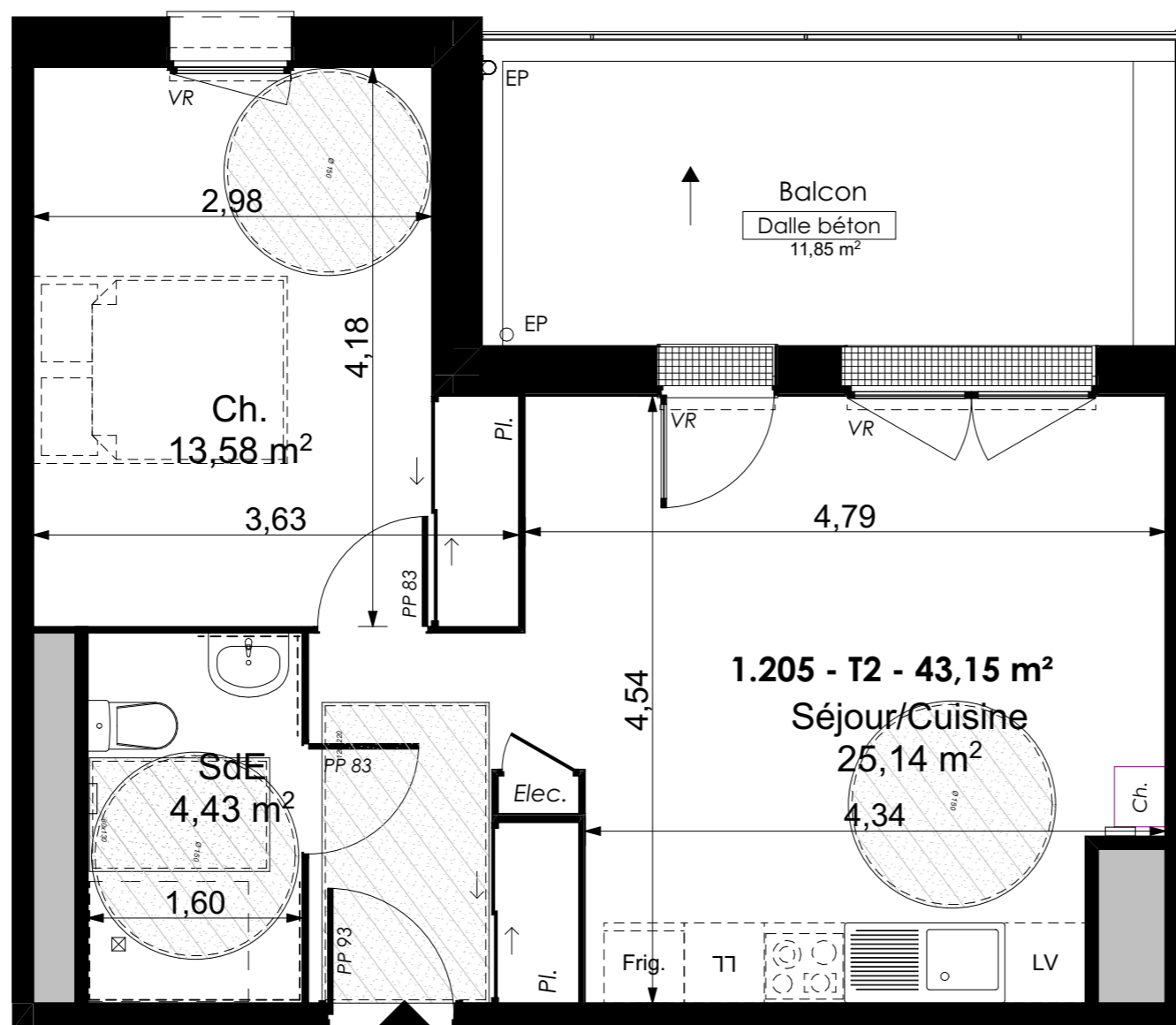


**Valloire Habitat**

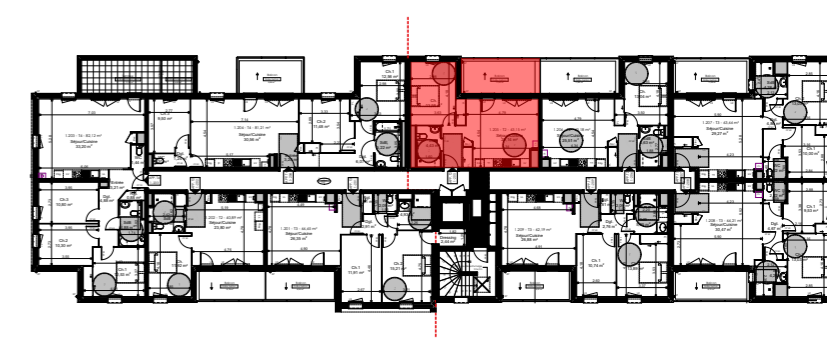
Groupe ActionLogement

28 bis rue du Gros Raisin  
45750 SAINT-PRYVE-SAINT-MESMIN

Les BoRéales de Saint-Pryvé



TYPE T2 - LOGEMENT 1-205 R+2		
Séjour/Cuisine		25,14 m <sup>2</sup>
SdB		4,43 m <sup>2</sup>
Ch. 1		13,58 m <sup>2</sup>
Total surfaces habitables		43,15 m <sup>2</sup>
Annexes		Surf. Utile
<b>Balcon</b>		<b>11,85 m<sup>2</sup></b>
Total surfaces Annexes		11,85 m <sup>2</sup>
	TOTAL SURFACES	55,00 m <sup>2</sup>



15/11/2022      Indice C

Ech : 1:50

0.00   0.50   1.00   2.00   3.00